



TURNKEY INTERIOR SPECIALISTS
— Since 2004 —

Turning Creative Concepts
Into Desirable Spaces

Etihad Airways First Class Lounge

الخط
ETIHAD
AIRWAYS
ABU DHABI

ETIHAD
AIRWAYS
PARTNERS

A multi-disciplinary Design & Build Contractor with vast turnkey interior fit-out and refurbishment experience. We host integrated in-house service divisions with a team of over 600 employees passionate about creating memorable spaces and a significant portfolio of prestigious projects.

Design & Build Specialists

Since 2004, TRI has respected the trust that our clients have invested in us to rise to the challenge. Our extensive experience and industry knowledge of design and build has added value over and above our client's expectations in earning recognition from top brands.

Our specialist team offers focused and bespoke approaches to their projects combining the practical with the aesthetic. We are committed to delivering a consistent and comprehensive range of interiors crafted to the requirements of each client.

Using the finest material, superior workmanship and in-house manufacturing capabilities to create high-end and sustainable spaces. Our capabilities and experience in interior fit-out and furnishings enables large-scale projects to be carried out to the highest standards, and within the given cost and time frame constraints with an approach always focused on quality and timely completion.

Comprehensive Design & Space Planning | Interior Contracting | Creative Interior Concept & CGI Visualisation
MEP | Professional Lighting Design | IT Integration | Furniture & Equipment Specification
Interior Design Management | Professional | Project Management

GLOBAL REACH

UAE

QATAR

BAHRAIN

UK

KSA

INDIA

Top Rock Group of Companies



TOP ROCK INTERIORS LLC

Dubai / Abu Dhabi



TOP ROCK INTERIORS WLL

Qatar



TOP ROCK INTERIORS WLL

Bahrain



TOP ROCK INTERIORS LTD

United Kingdom



TOP ROCK INTERIORS LLC

Kingdom of
Saudi Arabia



TOP ROCK INTERIORS PVT LTD

India



TOP ROCK STEEL LLC

Dubai



TOP ROCK GLASS LLC

Dubai



BU HAMAD MARBLE INDUSTRY LLC

Dubai

Why us

With 16+ years of extensive experience, we are a diversified global company with grounded presence in 5 countries. Today, Top Rock Interiors is a leader in the interior design and build industry.

We advise, design, develop, manufacture and install interior works for our customers in sectors ranging from Retail, Food & Beverage, Leisure, Fashion and Commercial - from single-trade jobs to turnkey solutions, for new builds and renovations.



17+

Years of Excellence



600+

Team Strength & Growing

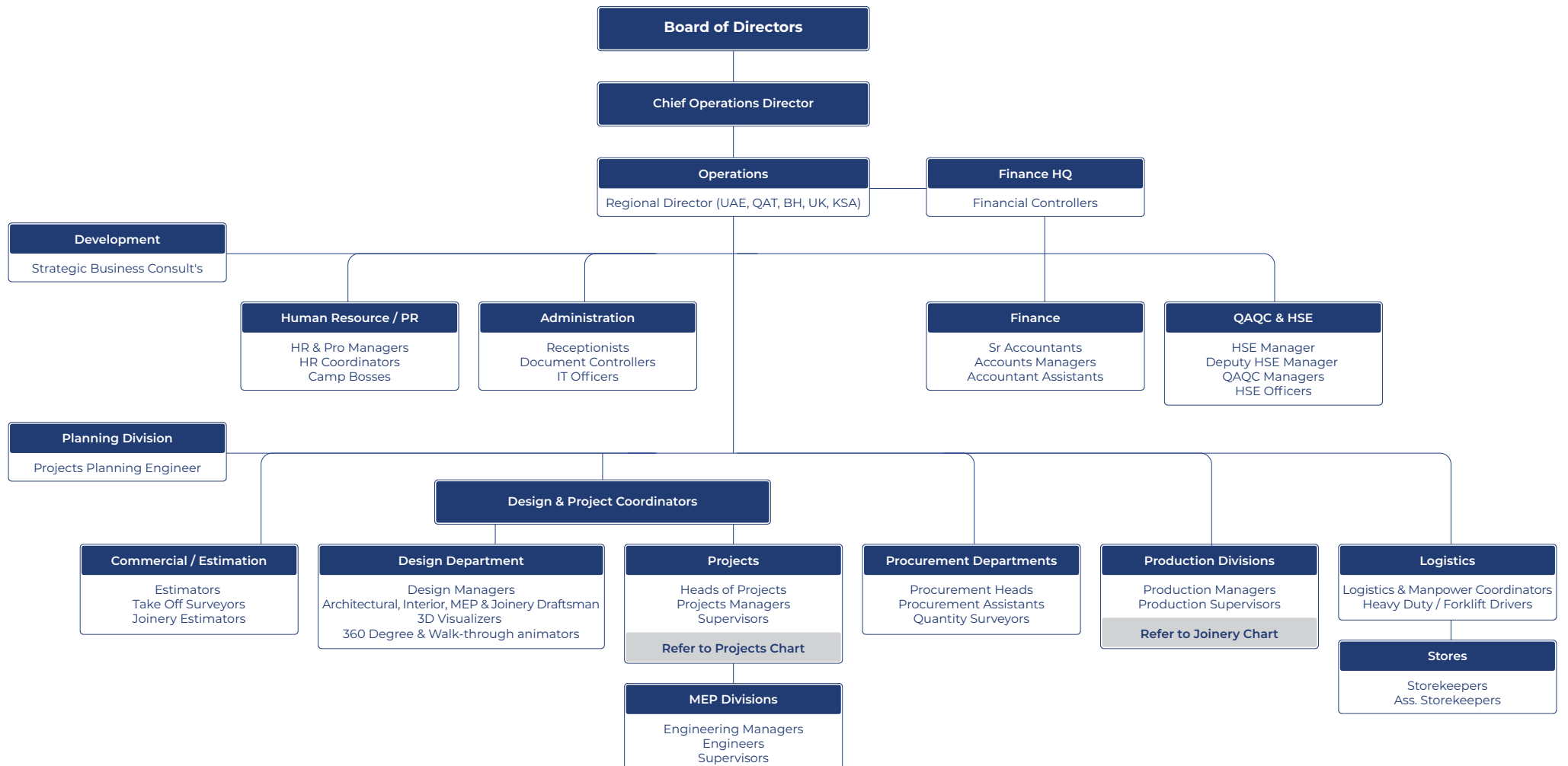


1760+

Successful Projects

Management Structure

Currently TRI's management and administrative team of over 90 personnel effectively support our highly skilled workforce of more than 520 artisans from all disciplines. Our professional team work relentlessly to deliver creative and cost-effective solutions to always exceed our client's expectations.





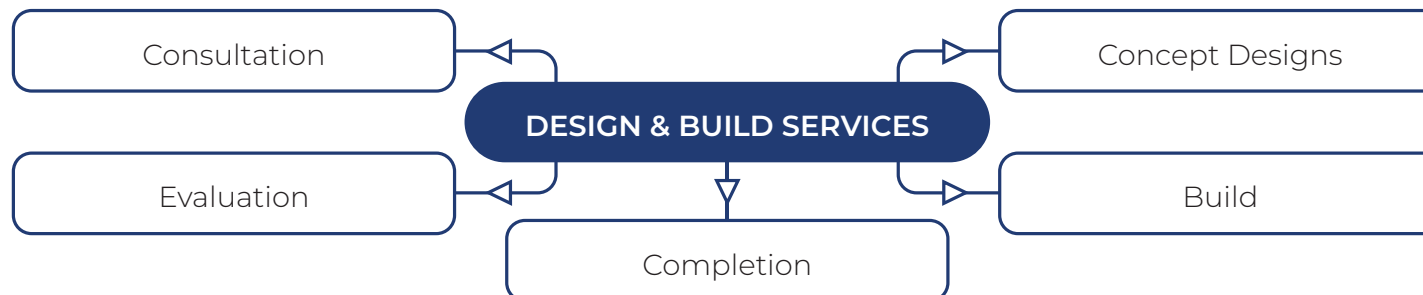
Turnkey Interior Design & Build Solutions

Innovative design solutions, responding to individual client's needs.

Top Rock Interiors has a passion for creative Architectural and Interior Design, with offices in Dubai, Abu Dhabi, Bahrain, Qatar, United Kingdom and Saudi Arabia. Our dynamic international design teams, have extensive experience in regional and international projects, and the ability to deliver signature projects from inception, to final handover of completed projects. Global exposure to a broad spectrum of projects, has developed our skills base to encompass numerous market sectors which include:

- Leisure and Health
- Entertainment
- Restorations and Refurbishment
- Corporate and Commercial Spaces
- Retail
- Private Residences and Luxury Villas

With multiple award-winning projects to our name, we bring a unique blend of creativity, innovation and technical excellence to the projects we design and build. We are committed to delivering exemplary designs which embrace the principles of sustainability, appropriate state of the art technology and high levels of service, thereby reinforcing our standing as a leading Turnkey Interior Design and Build contractor. Established in 2004, our services progress in scale, scope and expertise. Having designed and completed over 1600 projects, Top Rock Interiors status as a global competitor is well established. At Top Rock Interiors we believe that quality architecture, exceptional interior design and projects delivered passionately with responsibility, contributes to a better environment and cost effective solutions.



Consultation. Evaluation.
Concept Designs. Build.
Completion.



Consultation

TRI is a dedicated interiors specialist, undertaking fit-out and refurbishment projects. All of our staff are highly qualified, motivated and committed specialists with extensive and diverse experience. You can be assured that all of your needs will be understood and taken care of.

01. CONSULTATION

01. Client Brief

Our project manager and designers will oversee the initial client brief to ensure that it addresses all your construction issues and covers all your needs.

02. Values

At Top Rock Interiors, we want to understand your business and your values so that we can successfully meet your needs. Whilst we are working with you, we like to think of ourselves as an integral part of your business, so that your values become our values.

03. Branding

Our extensive experience of working with blue chip household names have made us aware of the importance of brand design. We are able to work within existing style guides or help you to create your own brand image.

04. Aspirations

We derive our job satisfaction through exceeding your aspirations and expectations. In all cases we strive to leave you more than satisfied with our designs and ideas.

05. Financial Objectives

TRI is dedicated to keeping cost to and within your budget. We recognise and respect your financial objectives. Our system of constant checks and updates allows us to control expenditure from commencement through to completion.



Jehangir Restaurant , Dubai



Jehangir Restaurant , Dubai



Jehangir Restaurant , Dubai



A modern interior space featuring walls with vertical, wavy, illuminated panels. A curved, light-colored reception desk is positioned in the center. The ceiling has recessed lighting and a track of spotlights. A glass-enclosed staircase is visible in the background. The floor is dark and reflective.

Consultation. Evaluation.
Concept Designs. Build.
Completion.

Evaluation

TRI believe in delivering a complete and professional service within budget. Our specialist team will evaluate all aspects of the project that will help lay the foundation for a creative and successful design project.

02. EVALUATION

01. Technical Survey

Site surveys are conducted as standard by our specialist team of project managers, designers and MEP specialists. They will make all necessary assessments. Our designers use state-of-the-art digital equipment to check design dimensions and update any existing outline drawings before any design work commences.

02. Work Place Audits

In order for us to fully appreciate your needs, work place audits are implemented in all of your departments. We also create new and update existing floor layouts.

03. Audits

We carry out audits in order to evaluate the activity and potential growth of all your departments and the need for specific facilities.

04. Space Evaluation

Key to the success of every project is the understanding of your working practices and an evaluation of how to maximise your work space. Our design service covers minimum space allowances, storage access, primary circulation, departmental analysis, travel distances and disability access issues, by analysing your space requirements. We can effectively plan for your future objectives.

05. Cost Evaluation

TRI will evaluate the costs for the project after all initial checks and surveys have been completed. This enables us to determine what can realistically be achieved within budget or what changes can be made to effectively meet your budget and objectives.



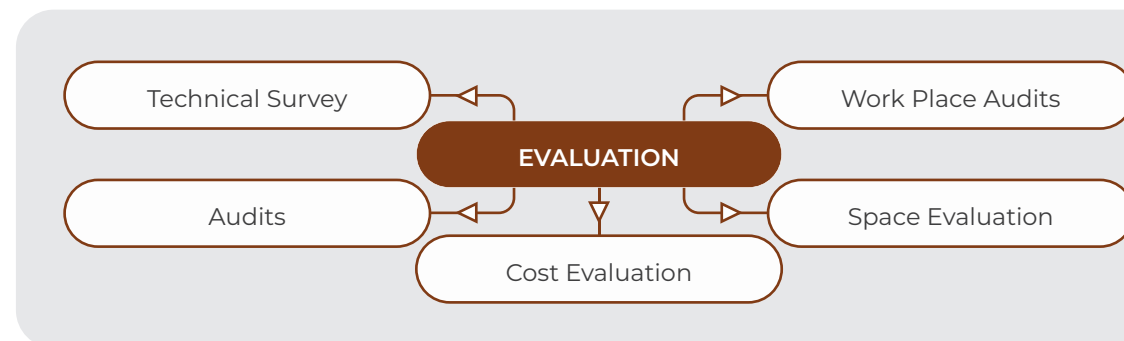
Bahmani Group, Dubai



Bahmani Group, Dubai



Bahmani Group, Dubai





Consultation. Evaluation.
Concept Designs. Build.
Completion.

Concept Designs

TRI concept designs are amongst the best in the industry. Our team of specialist designers and architects produce draft plans and final concept designs by using advanced CAD software. To fully appreciate your new environment our designers will produce photo-realistic renders and animations, providing you with total confidence.

03

03. CONCEPT DESIGNS

01. The Client's Brief

Every design presentation is preceded by a summary documentation that confirms we have clearly understood our client's brief and objectives.

02. Draft Layout

Our designers will produce draft layouts and initial concept designs with mood boards and supporting literature. This is a standard procedure to make sure both parties are confident with the design process and direction. At TRI we use advanced Computer Aided Design software to ensure you receive precise drawings, to the highest standard. We ensure conformity and promote best practice.

03. Design Presentation

Upon completion of your concept designs we will arrange a presentation where we can cover all aspects of the project in person with your appointed personnel. Material sample boards are used in the presentation to confirm all finishes, colours, lighting, partitioning, flooring and other executions. We minute each meeting and will always remain determined to deliver your expectations until you are completely satisfied to sign-off the chosen design proposal.

04. Visual Designs

Our design team are skilled at producing hand drawn visuals, photo-realistic renders, animations and walk-throughs, using advanced 3D Studio Max software. This enables our clients to visualise their completed interior design.

05. Budget

TRI place key emphasis on customer satisfaction and endeavors to keep all concept designs within budget, offering a choice of 'fit-out' solutions that will compliment you achieving the perfect result.



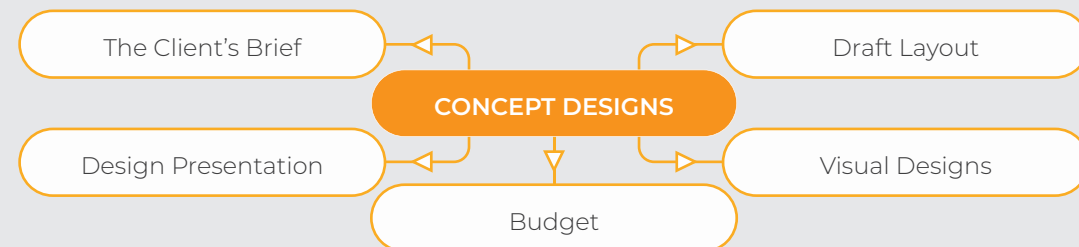
Etihad Airways




Etihad Airways



Etihad Airways





Consultation. Evaluation.
Concept Designs. **Build.**
Completion.

Build

We create and build bespoke professional interior environments through our interior fit-out service. We provide all aspects of interior refurbishment in-house including demolitions, partitioning, ceilings, floors, joinery, solid surfaces from Corian, glazing, decorative aluminum and steel, upholstery case work, bespoke furniture and finishes, mechanical, electrical, plumbing and ELV services. Our unique single fee approach covering design management and installation provides best value for money and is tailored to your needs.

04. BUILD

01. Programme

Full turnkey projects are seamlessly managed with all services included. Our project managers and planners will manage and co-ordinate all aspects of the programme releasing you to do what you do best.

02. Final Designs

Before commencing a project, designs are fully worked up and signed off ensuring all parties are fully aware of the works to be carried out. Clients are kept informed throughout the build process, should any changes be necessary.

03. Project Team

Our team of in-house professionals can provide you with a fully comprehensive turnkey service from conception to completion for all of the works.

04. Quality

We deliver consistent quality across all our teams and services. At TRI, we aspire to deliver seamless quality to all clients. Every project we undertake is underpinned with the same drive and commitment to quality.

05. Contracts

Top Rock Interiors is able to work under the terms of any nationally recognised contract, subject to agreement of wording. Our Interior and Architectural Design service is a large part of our business but we are equally adept working solely as contractors. Our experience as contractors has often allowed us to value engineer schemes and provide our clients with a more financially attractive end result.



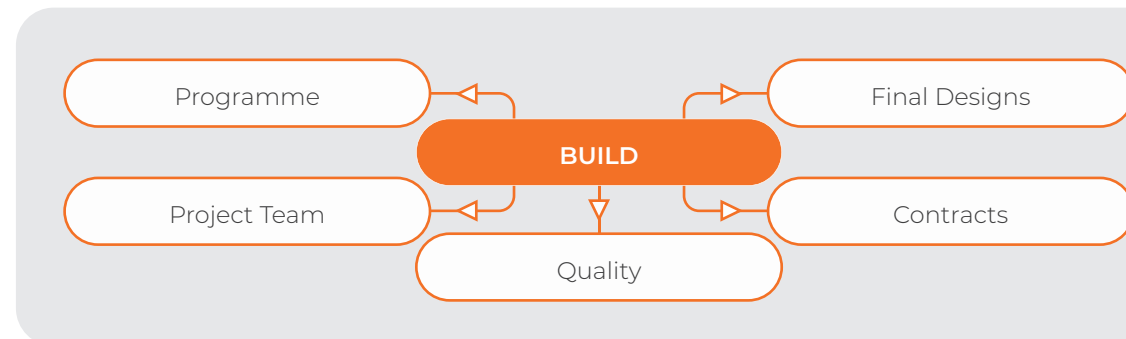
Leila Restaurant, Dubai



Leila Restaurant, Dubai



Leila Restaurant, Dubai





Consultation. Evaluation.
Concept Designs. Build.
Completion.

Completion

The TRI ethos is one of continuing relationships. We always ensure projects are complete on time and in budget with our clients in complete satisfaction. Our aim is to continue to be your first choice Turnkey Interior Specialist Design and Build contractor for all your future needs.

05. COMPLETION

01. Handover

TRI objective is via the use of our monitoring systems to deliver as complete and defect-free project as is practically possible. A satisfied client is our testimonial. We strive for efficiency and excellence in every project.

02. Occupation

Our dedicated project manager will be present at occupation to answer any queries and carry out training requirements.

03. Educate

All technical systems installed by Top Rock Interiors are demonstrated to the client before occupation, enabling them to function confidently and efficiently from the outset.

04. Operating & Maintenance Manuals (O&M's)

O&M Manuals will be provided at handover and will include all documentation required to demonstrate the works installed along with any ongoing maintenance requirements.

05. Beyond

It is TRI's practice and belief that our Client relationships should extend beyond the completed project. A Top Rock point-of-contact will remain dedicated to you for your future reference and requirements.



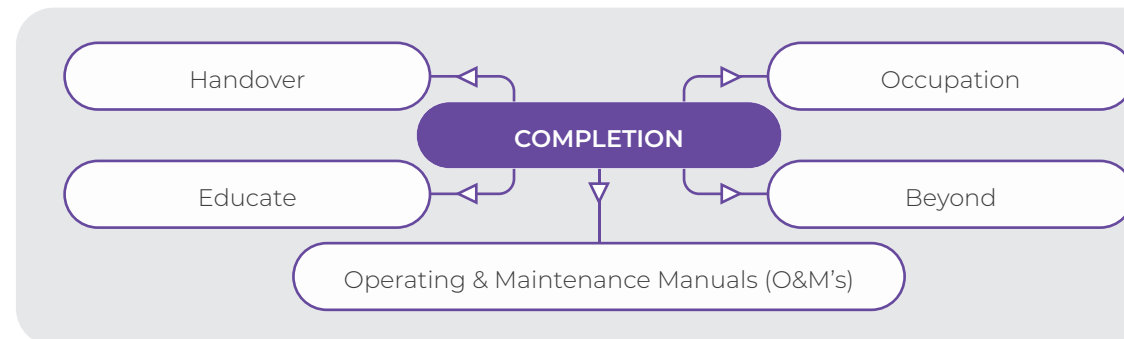
PF Chang's, Dubai



PF Chang's, Dubai

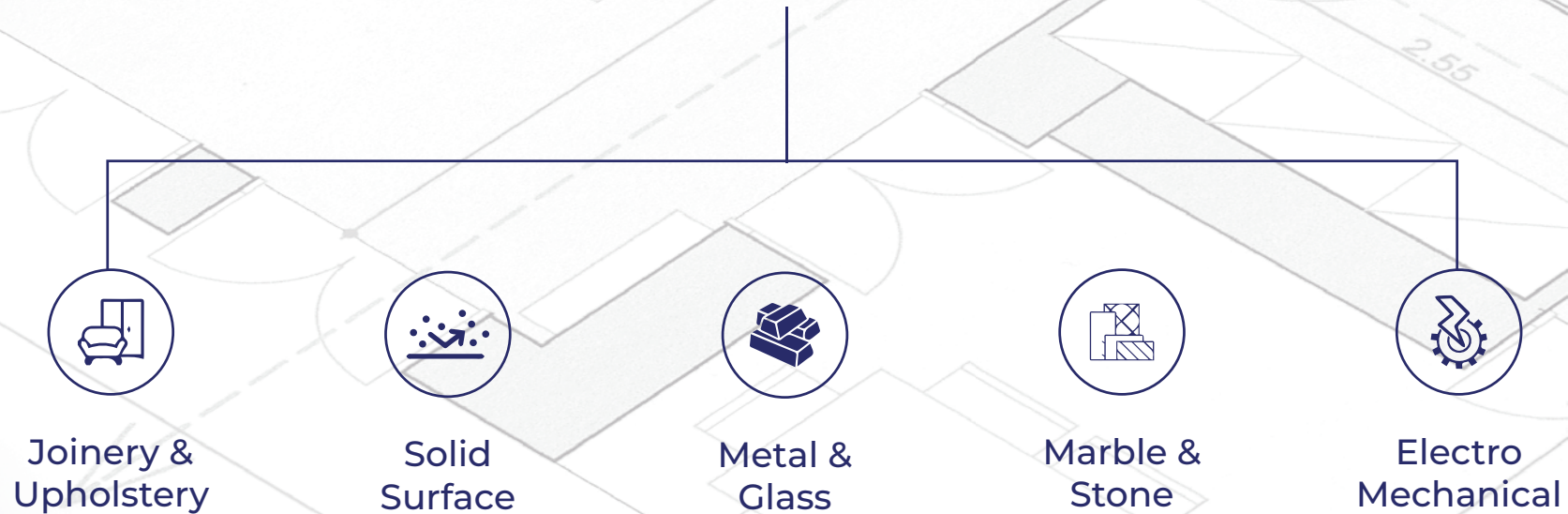


PF Chang's, Dubai



Our Divisions

Turnkey Fitout Contracting



Joinery & Upholstery

Our in-house joinery and joinery design capabilities ensure seamless coordination and the highest level of finish as all touch points are internally controlled throughout the entire manufacturing process.

As joinery forms a very significant part of the fit-out process, it becomes crucial to ensure accuracy and quality of shop drawings.

Our custom joinery drafting encompasses building products that are intended for decorative purposes and engineered-to-order. After studying the architectural drawings, the necessary shop drawings are prepared by our draughtsman to be executed by our manufacturing teams.

Our precision woodworking divisions have machining, polishing and assembly capabilities which allows us to create complex and bespoke joinery items. The machining process integrates CAD drawings with CNC routers and other computerized woodworking machines, enabling Top Rock Interiors to provide tailored solutions for all our customer's needs.

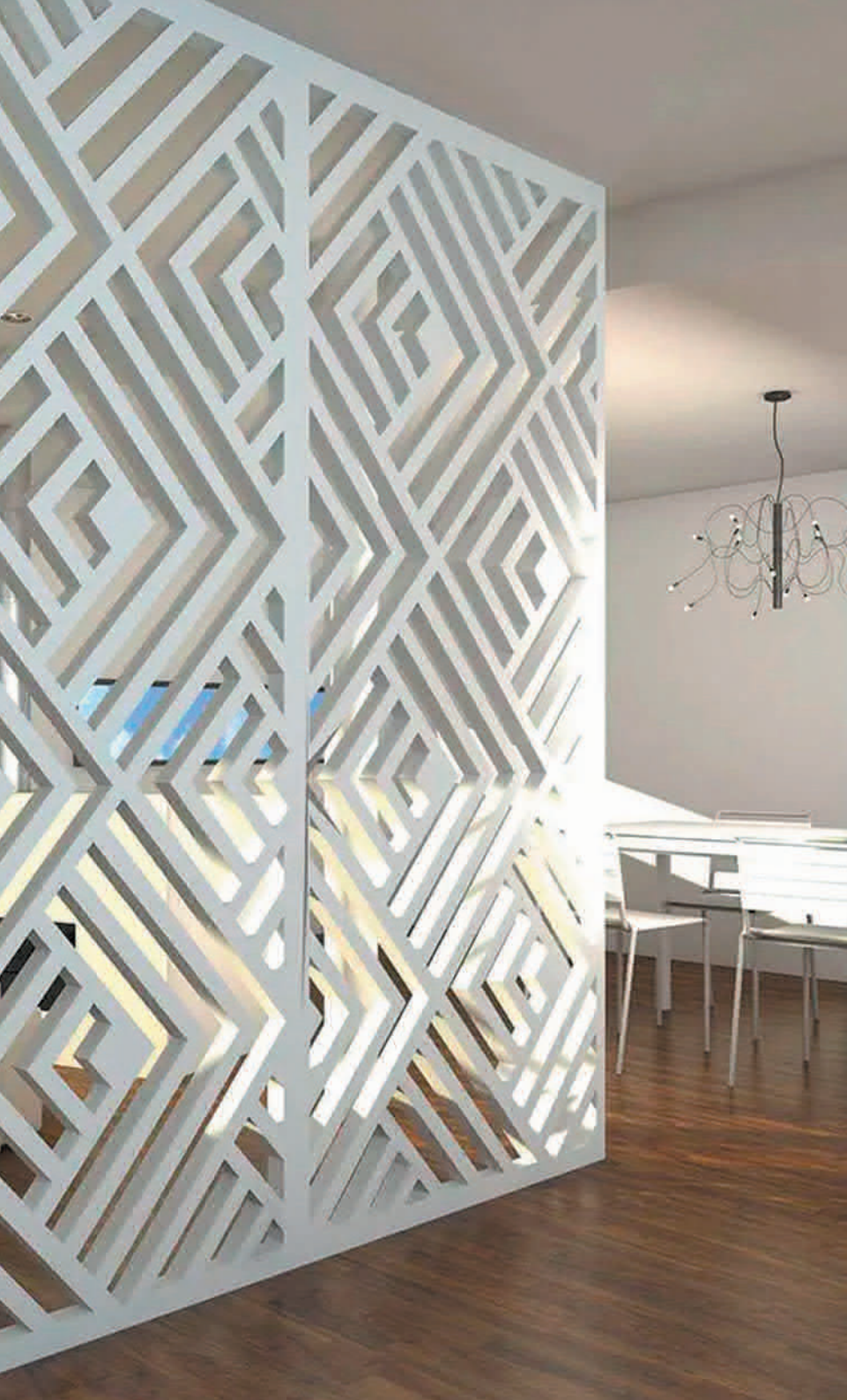
As part of the assembly process, and with the assistance of our experienced polishers and painters, the finished product is prepared to any specification.

In all our facilities, the entire production process is overseen by our production managers and supervisors, from planning to onsite installation of the completed product.

Our expert upholsters works in a variety of materials whether it is the luxurious appearance, wide choice or durability of natural leather or synthetic material technologies that meet all your requirements and performance expectations or woven, non-woven and knitted interior fabrics in a wide variety of applications.

We offer a full-service portfolio of tailor-made solutions that add style and performance to your project furnishings, fabric panelling, sofas and bench seating. The finest materials are used with high density foam on plexi or solid wood frames.





Solid Surface

We frequently use Solid surface materials for seamless surface cladding installations as it mimics the appearance of granite, marble and other naturally occurring material.

Due to its unrivaled performance, the industry has grown exponentially and our in-house team and expertise in solid surfaces has grown accordingly. TRI's artisans can shape and install functional and decorative surfaces for any possible scenario across any project.

Our dedicated teams are trained in surface fabrication, a distinct professional enterprise that involves complex tasks of surface shaping through cutting, drilling, sculpting and bending.

Surface fabrication takes place in our factories, after which the

finished product is assembled and installed at site. We are able to create seamless results through having a wealth of experience in doing multi-part surface installations which involves complex work with specialized tools.

We advise our clients on the various advantages of solid surface materials:

1. Non-penetration
2. Chemical resistance
3. Scratch resistance, stain resistance, heat resistance
4. Anti-bacterial
5. Seamless joins
6. Easy maintenance
7. Yellowing resistance
8. Well bending
9. Freely ease of fabrication and design
10. 100% renewable and repairable



Metal

Decorative metals, specialized mild steel, stainless steel, structural steel, and glazing are disciplines we specialize in.

Our in-house capability to integrate metal, glass and aluminum into products gives Top Rock Interiors unrivaled abilities.

We offer advanced technology that allows us to balance the mechanization of the process with manual work where needed.

Our factories consist of a full range of steel fabrication, bending and steel milling machinery.

TRI's metal divisions are capable of providing an array of finishes including custom polishing and powder coating.

Our custom metal works includes stainless steel kitchen surfaces, balustrades, wall claddings, decorative furniture, signage, display units and light boxes.

Glass

TRI's glass division offers glass cutting, polishing, straight and round beveling, plain and engraved sandblasting, curved glass, frameless shop fronts and double-glazed installations.

Our manufacturing process is guided by foresight, planning and robust engineering.



Marble & Stone

Our experienced team of artisans ensures that every aspect of your interior or exterior installation project is completed to the highest standard.

TRI offers personalized and professional solutions for marble and stone projects through selection, supply and installation.

Our marble and stone services include staircase designs, marble & stone solutions, waterproofing, stone works, floor leveling, grinding and interior and exterior tiling.

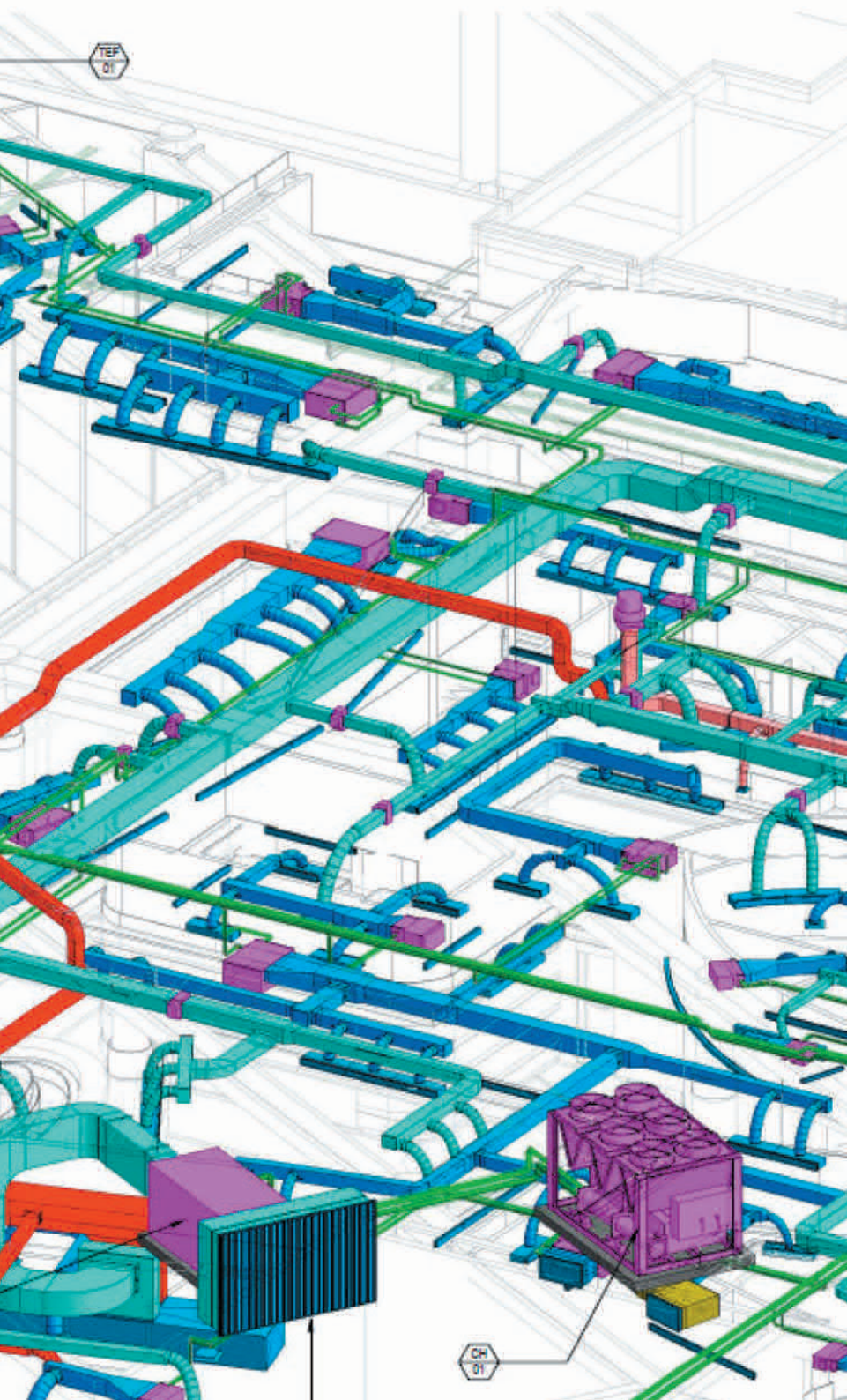
We can provide flawless installation of iconic flooring with intricate patterns, carved columns, wall covering, domestic and commercial countertops, vanities, mosaics, patterns,

boarders, threshold, designed profile skirting, shower niches window sills and backlit panels.

Our skilled craftsmen have experience working with marble, granite, agate, onyx, travertine, quartz and natural stone.

Your stone or marble selection can have a honed, brushed, flamed, tumbled, sandblasted, cleft, vintage, split face, natural, pickling, bush-hammered, leathered, rigato or tumbled finish.

We can provide edge finishes in half round, full round, pencil round, OG, chamfer, 2+2 counter top face or any specific profile design.



Electro Mechanical

Top Rock Interiors offers a complete Mechanical, Electrical and Plumbing engineering service from initial client meetings to energy survey's and preparation of working drawings through to installation, testing and completion.

These services include:

- Engineering, Consultancy, Technical Assistance, Maintenance and Procurement.
- Design, Prefabrication, Erection and Commissioning of all kinds of new installations up to final completion.
- Full range of Training, Operating and Maintenance Services including supply of equipment, consumables, spare parts.

Our MEP managers and engineers understands the dynamics of fast-track schedules and rigorous construction standards and that these three technical disciplines encompass the systems that make buildings suitable for human occupancy.

Mechanical Scope of Works

Air Condition and Ventilation

- Unitary Cooling (Split Units)
- Central Cooling
- All Air Systems
- All Water Systems
- Air and Water Combined Systems
- Variable Refrigerant Flow Systems

Fire Protection Systems

- Fire Suppression Systems
- Water Suppression Systems
- Smoke Control Systems
- Gas Suppression Systems
- Stand-alone Suppression Systems (FM200)
- Central Suppression Systems (Inert Gas)

Building & Facility Management Systems (BMS)

LPG Systems

Electrical Scope of Works

- Low Voltage
- Cabling
- Cable Tray System
- Distribution Panels
- Uninterrupted Power Supply (UPS)
- Lighting and Power Supply
- Lighting Control Systems

Extra Low Voltage

- Data & Phone
- CCTV & Security Systems
- Public Address & Voice Evacuation System
- Emergency Lighting

Fire Alarm Systems Grounding (Earthing) Lighting Protection

Plumbing Scope of Works

Domestic Cold Water Domestic Hot Water Sanitary Drain Process Drain and Treatment

Food & Beverage

Over the past 16 years we have built over 900 F&B outlets and have worked with various leading international and local brands. Our experience ranges across multiple categories including café's, restaurants, casual dining and chains.

As one of the largest hospitality fit-out contractors in the GCC and UK markets, we differentiate ourselves by offering our own in-house design, manufacturing, supply and installations offering turnkey solutions. This ensures we can guarantee costing and quality control, from the beginning to the end of your fit-out project.



LADURÉE
Paris



Carluccio's





Retail Sector

With a history in Interior fit-out, Top Rock Interiors has successfully built and delivered over 800 retail stores for our clients globally. By offering design and build services under one roof, we can guarantee every stage of your project runs smoothly, from planning to construction to handover.

Our retail division specializes in multi-site location builds, rollouts and boutique venue fit-outs in the fashion industry for luxury brands.

Debenhams



coast



Berluti

LANOLO BLAHNIK



Miss Selfridge



COS



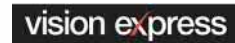
LE LABO®
GRASSE - NEW YORK



DKNY

MILANO
ITALY





Corporate Sector

Our workplace division specializes in delivering largescale office fit-out projects. Overseeing the project from the initial planning and strategy stages through to completion ensures we deliver commercially viable solutions and a competitive experience for all stakeholders. This holistic approach gives you better value and better control over your entire fit-out project, saving you time and money. It also means you have one point of contact before, during and after delivery – eliminating the hassle of coordinating with multiple service providers.

We are able to deliver superior designs through collaboration between our engineers, consultants and designers, mitigating or minimizing any project risks before they happen. Our collaborative multidisciplinary approach has proven to be vital when delivering complex projects successfully; it is a system you can trust to deliver your project.



Airports

Quality of interior fit-outs is immensely important in creating the best retail, f&b, hospital and leisure environments that stand out in today's competitive marketplace. At TRI, our experts have worked alongside some of the world's most recognisable brands, creating inviting and memorable places that ensures loyal customers. Our projects in Abu Dhabi, Dubai and Qatar airports are a true testimonial of our capabilities to execute world class interior fit-outs for some of the top international brands.

Delivering the places of tomorrow requires the ability to think big, collaborate widely and meaningfully, and build in real capacity for change. For this reason, everything we do at TRI, from our work with our customers to our relationships with our own people, is focused on delivering smarter and more resilient places of tomorrow.



Leisure & Healthcare

Top Rock Interiors has an enviable track-record delivering long-lasting solutions in the hospitality and healthcare sector. From high end First and Business class lounges to Disease Prevention and Medical Screening facilities our varied portfolio includes base build works, refurbishments and new interior fit-outs.

Committed to delivering successful high-quality outcomes, our team collaborates with the best in the business to ensure seamless delivery. Our extensive experience working in occupied site environments also means we can work with you to allow continuous trading wherever possible.



Our Clients

We are proud of the fact that we receive 75 percent of our business from our existing client base. We believe that this demonstrates that we build relationships with our clients and become trusted advisors; we strive to provide you with an unmatched quality of service before, during, and after each and every project.





Testimonials



We are pleased to inform you the Etihad Airways' Premium First Class Lounge & Spa at Terminal 3, Abu Dhabi International Airport, has received numerous accolades and praise from our premium customers and the media. On behalf of the airline, I would like to take this opportunity to thank you and your entire team for your outstanding support and dedication in the successful completion of this fast-tracked, high profile project.

Mark Wilkins

Vice President, Property & Infrastructure, Etihad Airways



We take this opportunity to thank you and your team for your continual support and contribution to the success of our business. We shall be more than glad to refer Top Rock Interiors as the preferred contractor for turnkey interior fit-out works. On behalf of the Anotah team we once again thank you and look forward to continuing our successful professional relationship for many years to come.

Anas Ihsan Al Tahan

General Manager, Anotah Group – Media Wiki



I would like to take this opportunity to thank you for your continual support and contribution to the success of our business. On behalf of the Alshaya retail property team a very big Thank You and we look forward to continuing our successful relationship for many years to come.

John Hadden

Senior Vice President, Retail Property, M.H. Alshaya Co. – Max Mobilcom



With well earned respect, I confidently recommend Top Rock Interiors for any project works related to the interior fit-outs / builds in the food and beverage or fashion and footwear field. I had the good fortune of working with TRI over the past few years with the Foodmark group with various brand names such as Carluccio's & Pie Face. Prior to that with the Alshaya Group for three years building many of their well known brands such as Starbucks & Shakeshack.

Christopher Vile

Head of Projects, Foodmark



We have been working with TOP ROCK INTERIORS since past 5 years, they are one amongst the top turnkey fit out preferred contractors by our management. With our recently launched stores all over UAE - they were able to capture the authentic look and feel we were trying to achieve almost perfectly. They are a team of creative and pro-active professionals. Throughout the whole process we have found TRI team to be very professional, punctual and practical with our demands. As with any fit-out there were of course some issues, but they were resolved quickly and with minimum impact to us as a client. The after service has also been excellent and any issues that have come up have been quickly rectified.

Pankaj Agarwal

Managing Director, Bikanervala Restaurant



We would like to extend our appreciation for delivering high quality interior fit out solutions for our restaurants. We were jubilant to see the crowning achievement of the new outlet; it indeed looks astonishing. We are glad that our mutual efforts have meet the expected outcome. We take this opportunity to applaud your service throughout until completion, even in pandemic phase. You indeed have made your place in our preferred list of contractors. We are especially grateful for your team's commitment and their care in understanding our requirements, company values & providing solutions at every step. We thank TRI for their efforts and wish them the very best.

Prem Chandar

Executive Director, Capital Engineering Consultancy LLC (CEC)



We selected Top Rock Interiors over many contractors invited to bid for our projects for multiple reasons, namely: • They have a proven track record in delivering high quality projects on time; • They have most of the facilities that you would expect from a reputable interior fit out expert, in house, which enables them to meet deadlines, while maintaining the highest levels of craftsmanship. They worked closely with us in the design process, maintaining a high level of attention to detail. Despite multiple design adjustments during and throughout the project, their motivation and commitment were ever present. Snagging issues were dealt with swiftly and efficiently and for that, we would be happy to recommend them and use Top Rock Interiors in our future projects.

Ammar Al Alwan

Managing Partner, Crave Restaurants LLC



It is nothe first time working with TRI, I used to work with them while I was the General Managaer of Cravia UAE. We did several projects with several brands and TRI were the perfect choice whether in quality of work, speed of service or flexibility in fine tuning throughout the projects. We worked again together in Malak Al Tawouk, they built the 3 shops for us on an average of 5 weeks per project. TRI's post-project support is phenomenal, they "YES" attitude defferentiates TRI from other contractors in the market.

Mahmoud Harb

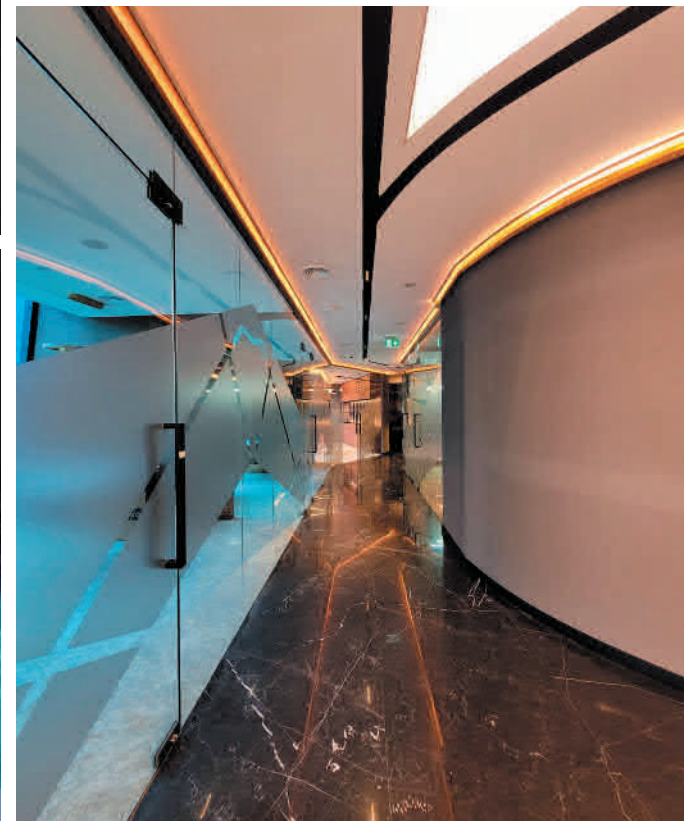
Managing Director, Malak Al Tawouk, Yummy Junction



We take this opportunity to thank you and your team for your continual support and contribution to the success of our business. We shall be more than glad to refer TOP ROCK INTERIORS LLC as the preferred contractor for Turnkey interior Fit-Out works. On behalf of GGICO GOURMET team we once again thank you and look forward to continuing our successful professional relationship for many more years to come.

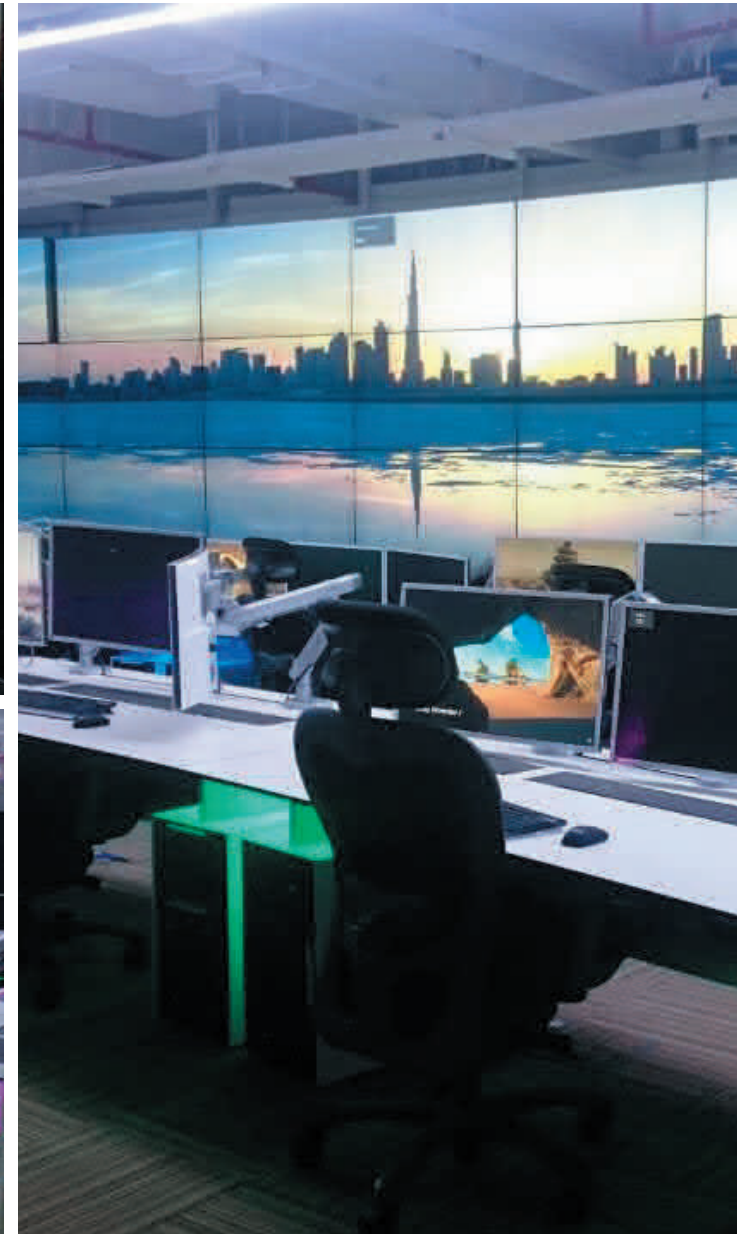
Mark Wilkins

Vice President, Property & Infrastructure, Etihad Airways



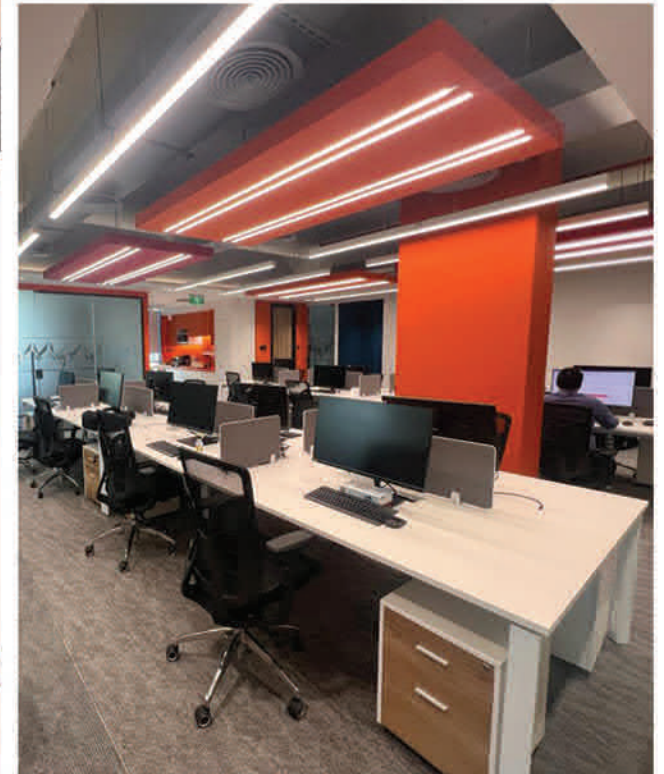
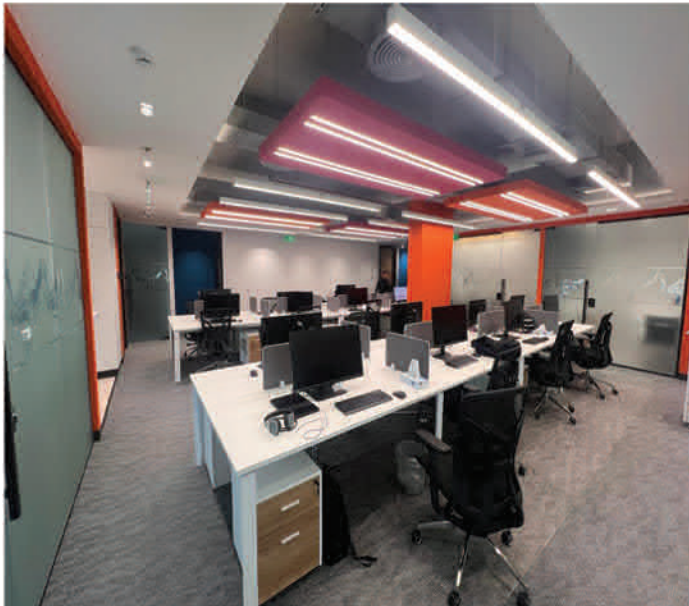
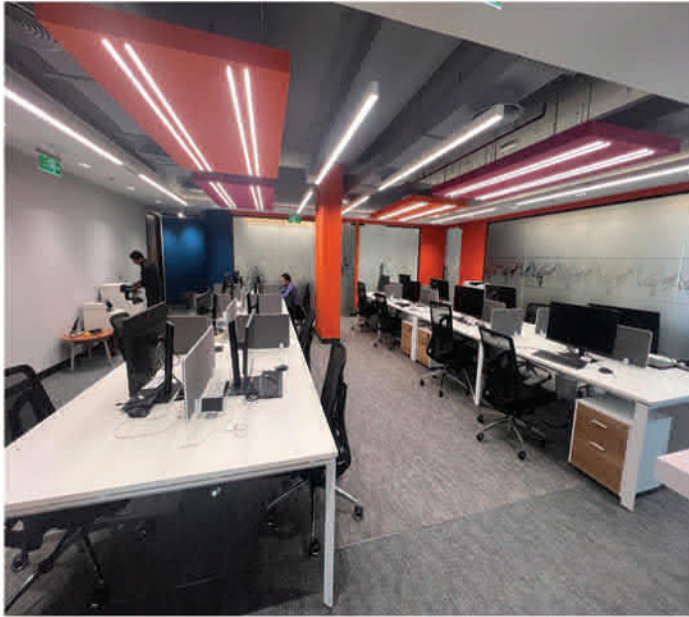


Corporate Sector Projects





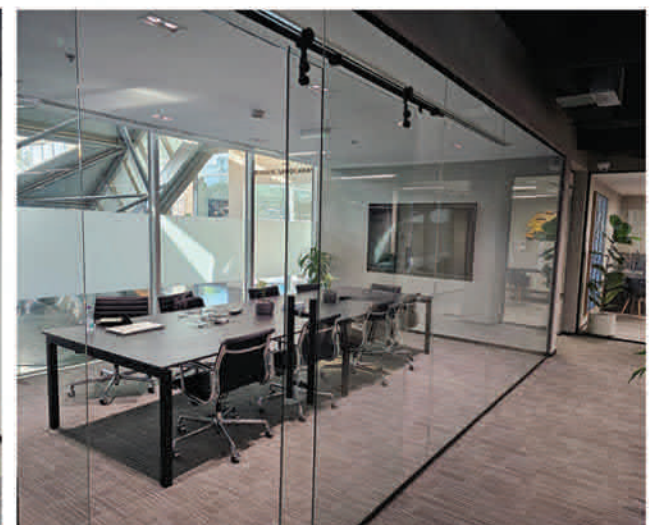
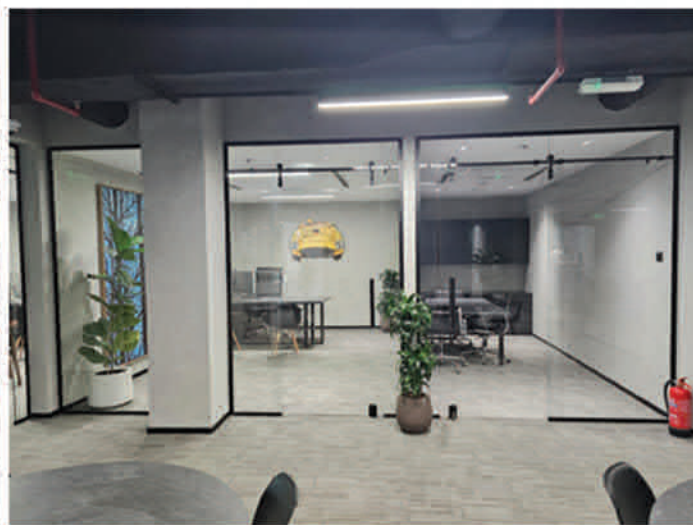
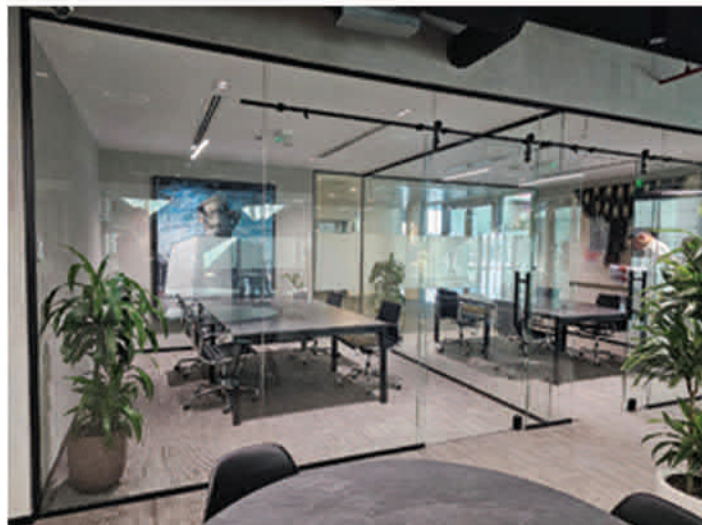
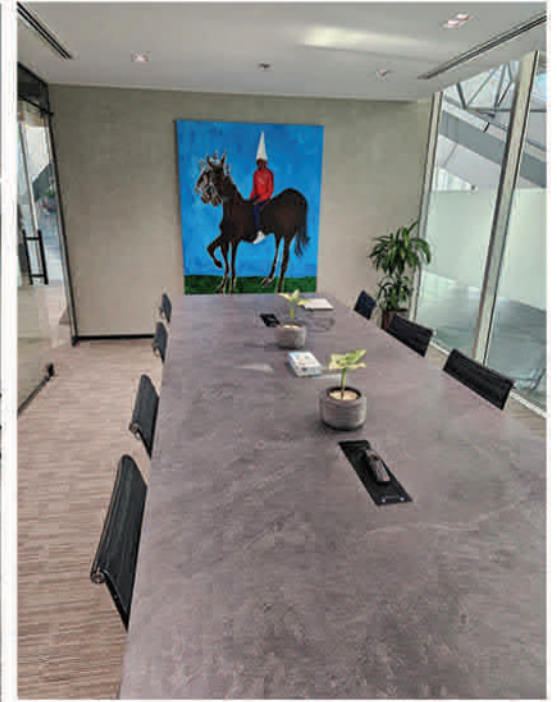
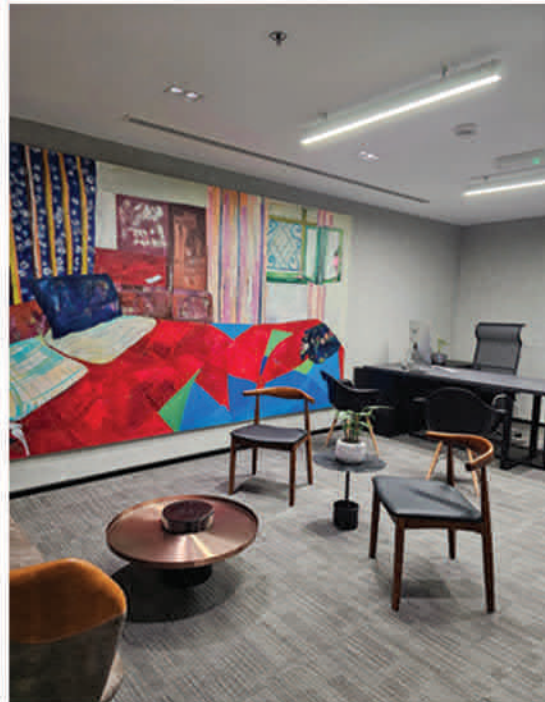
Corporate Sector Projects





Corporate Sector Projects





JO MALONE

LONDON

Retail Sector Projects





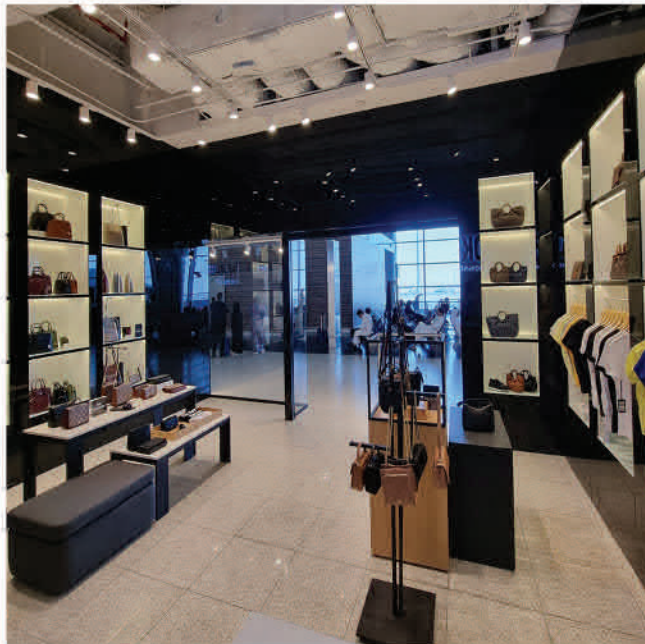
MANSAM

Retail Sector Projects



DKNY

Retail Sector Projects



sergio rossi

Retail Sector Projects





Retail Sector Projects



JO MALONE

LONDON

Retail Sector Projects



BOSS
HUGO BOSS

Retail Sector Projects





COS

Retail Sector Projects



coast

Retail Sector Projects





Retail Sector Projects



mothercare

Retail Sector Projects





Retail Sector Projects





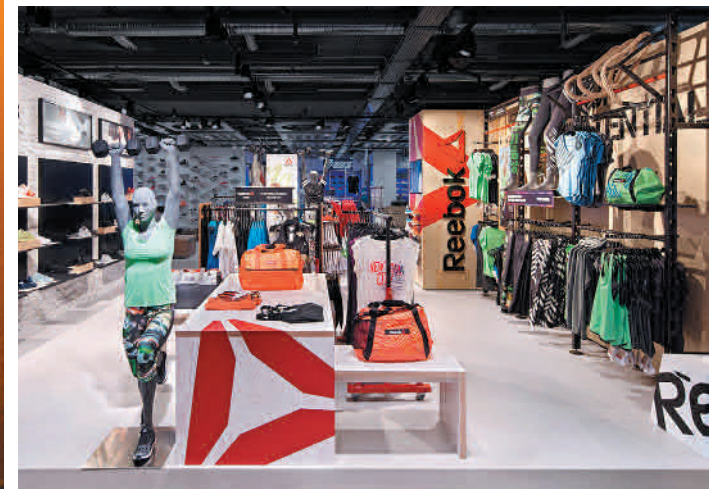
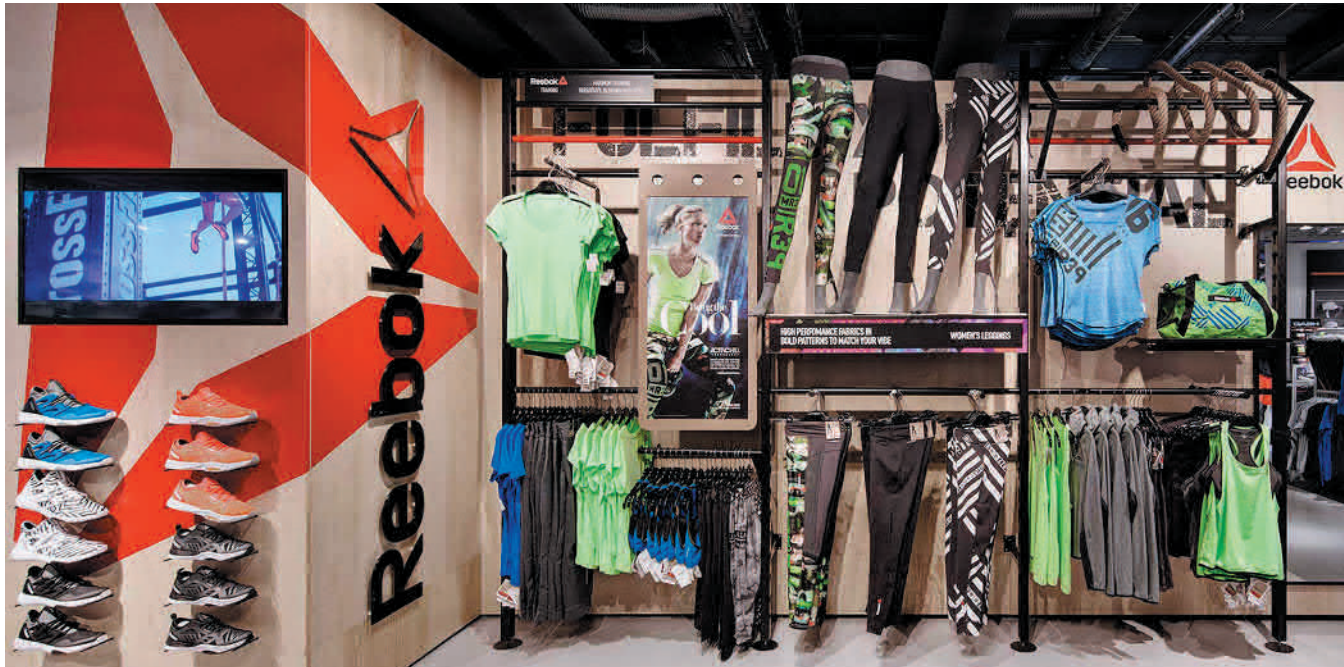
Retail Sector Projects







Retail Sector Projects





Retail Sector Projects





Retail Sector Projects





Retail Sector Projects



M·A·C

Retail Sector Projects





Retail Sector Projects





Food & Beverage Projects





P.F. CHANG'S

Food & Beverage Projects





Food & Beverage Projects





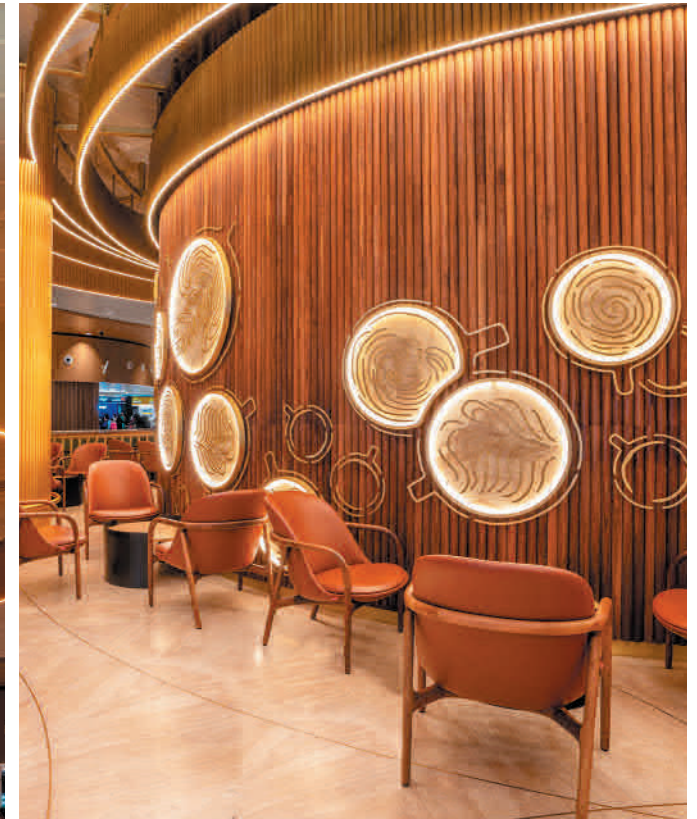


Food & Beverage Projects





Food & Beverage Projects





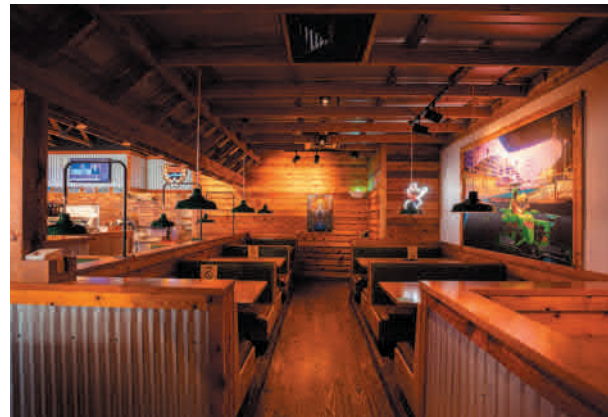
Food & Beverage Projects







Food & Beverage Projects



Food & Beverage Projects







Food & Beverage Projects



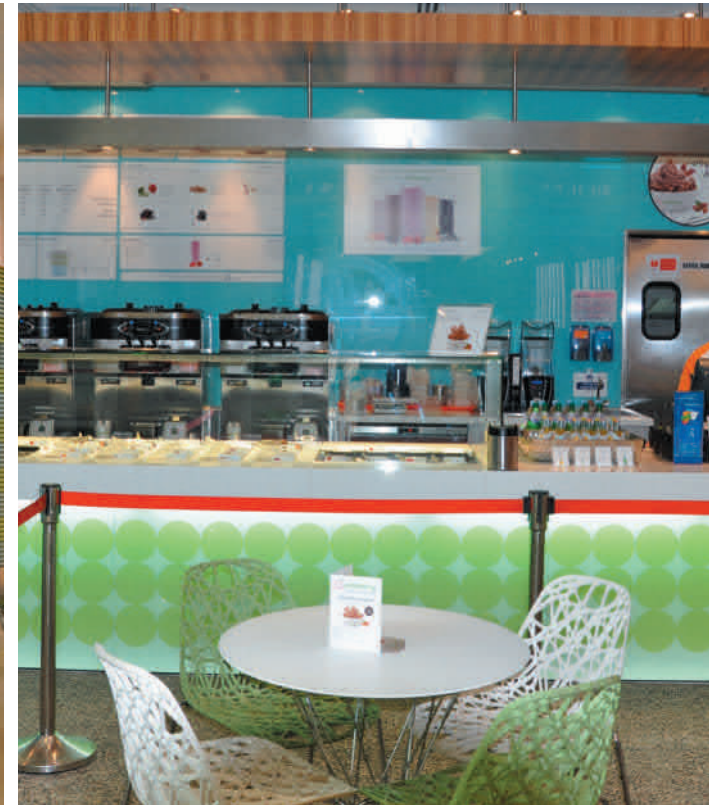
Carluccio's

Food & Beverage Projects





Food & Beverage Projects





Food & Beverage Projects





Food & Beverage Projects





QHSE Policy

TRI is committed to a Policy for Continual Improvement in the performance of our Quality, Occupational Health & Safety and Environmental Management Systems for our services that include:

Plumbing and Sanitary Contracting, Electrical Fitting Contracting, Floor and Wall Tiling Works, Painting Contracting, Carpentry and Flooring Contracting, Insulation Contracting, Interior Decoration, Partitions and False Ceiling Contracting.

This is achieved through:

- The commitment to continual improvement within our organization and to comply with all applicable quality, safety and environmental legislation.
- Delivering quality and timely services at all times to satisfy the needs of our customers.
- To reduce environmental aspects & impacts within and outside the organization.
- The commitment to prevent accidents, incidents and other hazards within and outside the organization.
- Requiring the commitment of all employees for implementing and maintaining the above in the organization.

This QHSE policy shall be effectively communicated to all our employees, subcontractors, visitors, interested parties and made available to the public.

Certifications





TURNKEY INTERIOR SPECIALISTS

Since 2004

www.toprockinteriors.com

UAE

TOP ROCK INTERIORS LLC

PO Box 119709, Dubai, UAE

Tel +971 4 26 77 401, Fax +971 4 26 77 402

info@toprockinteriors.com

India

TOP ROCK INTERIORS PVT LTD

B-29 Vasudhara Housing Apartments, Agrini

Township, Andalpuram, Madurai - 625 003

Tel +91 790 481 4951

info@toprockinteriors.com

Bahrain

TOP ROCK INTERIORS WLL

PO Box 65054, Manama, Bahrain

Tel +973 172 80 998

Fax +973 172 80 998

bahrain@toprockinteriors.com

KSA

TOP ROCK INTERIORS LTD

Riyadh, Kingdom of Saudi Arabia

Tel +966 56 594 5346

ksa@toprockinteriors.com

Qatar

TOP ROCK INTERIORS WLL

Ibn Seena Street, Al Muntazah

PO BOX 40530, Doha, Qatar

Tel +974 443 27 425, Fax +971 426 77 402

qatar@toprockinteriors.com

UK

TOP ROCK INTERIORS LTD

S04, Blyth Workspace, Commissioners Quay

Quay Road, Blyth, Northumberland, NE24 3AG

Tel +44 (0) 1670 338549

uk@toprockinteriors.com